

# Best Practices in Convergence between MGNREGS and NRLM

## RDD, Govt. Of Jharkhand

- SHG Mate
- NAREGA Sahayta Kendra
- VRPs
- GP Help Desk
- Participatory Planning
- Identification and Planning for 5 Poorest HHs
- Scheme completion certificate
- MKSP
- AKMs, APS actively roped in livelihood convergence

- Gram Nigaranani Samiti of VO
- CLF as PIA under consideration
- MGNREGA Processes are being made part of NRLM SOP
- Fly ash brick
- Sanitary napkins
- INRM, Dobha, Mango plantation, Parti vikas, Watershed approach

## SHG Mate

- Issued detailed guideline in June 2016
- Selection of SHG mates by respective Gram Sabha
- Work order is being provided by respective Gram Panchayat
- Proper training with exposure visit
- Strengthen the women participation in implementation of MGNREGA
- So far approximately 55000 SHG mahila mates have been trained
- 37831 SHG Mates have been given the work order
- Hand-holding support to workers
- Disseminating information at community level related to quality and quantity of materials









## **NREGA Sahayata Kendra (NSK)**

- Workers' platform at block level.
- Operated by 3-4 representatives of BLFs
- Helps to bridge the gap between Block administration and MGNREGA workers
- Submit Workers' grievances related to their entitlements (e.g. non-payment of wages, unemployment allowances etc.)
- Department has signed MoU with 15 NSKs
- Support them financially in the initial years of establishment.
- Training & capacity building of the NSK members have been coordinated by MGNREGA cell at SIRD in regular intervals
- DRPs of Social Audit Unit (SAU) facilitates field level progress review of the NSKs





## VRPs of Social Audit Units

- 4266 SHG members are selected and trained by SAU
- So far 756 have been engaged
- They are working as informed Village Monitoring Committee (VMC) members in their panchayats
- They have been offered the social status as Jury members in Public hearing from Panchayat to District hearing
- Work as motivators for MNREGA workers
- Act as MGNREGA ambassadors in their VOs
- As VRPs engaged for 23 days a month for Rs 550, per day
- As VRPS they do:
  - Entry Meeting
  - Door to door verification
  - Work Site Verification
  - Document Verification
  - Gram Sabha validation and
  - Facilitation in Panchayat Hearing













# Resource Multiplication



•Under its flagship programme 'Birsa Munda Bagwani Yojana', the department has treated almost 4000 Acre of unbunded homestead upland and converted it into an 'agro-horticulture model'.

•NRLM through JOHAR/JHIMDI-JICA/Irrigation cell is targeting to provide the facilities of Lift Irrigation/Drip Irrigation/Pumpset etc. to convert the plots under 100% assured irrigation permanently.













**Intercropping are done with the support of MKSP and Aajivika Krishak Mitra (AKM) provides handholding support to the beneficiaries.**









# Role of SHGs/VOs in Participatory planning



**The RDD has issued a guideline detailing the role of SHGs/VOs in implementation of MGNREGA**

- Discussion and information dissemination at group meetings at hamlet/village level
- Helping in discussion on planning processes at hamlet level meetings prior to planning exercises
- Actively participating in planning processes and helping to prepare resource map, social map etc.
- Make members aware about active participation in scheduled Gram Sabhas





# Resource convergence

**MGNREGA has completed 51209 of animal sheds for the poorest households proposed by the respective SHGs/VOs in their respective Gram Sabhas and gradually JSLPS (from its different own resources) is populating them with live animals.**

- 92704 sheds (Pig/Goat/Poultry/Cattle) are on-going and it will also be populated in phased manner. As all the beneficiaries are the members of SHGs/VOs, they would get training & capacity building and all the vaccination support through NRLM's internal Pashu Sakhi model.**
- So far 28620 NADEP/Vermi compost pits are completed and 28965 nos. of compost pits are on-going from MGNREGA and the training and capacity building of all beneficiaries to ensure 100% utilization of the assets have been taken as top priority by the JSLPS under its JOHAR project.**
- Agriculture equipments (e.g. Power tiller, Napsack sprayer etc.) have been provided by NRLM in various mango plantation plots through Vos.**



More than 1.40 lakh animal shed have been sanctioned and out of them approx 51000 sheds are constructed.

In the leadership of Hon'bl Chief Minister, Agricultural Department and JSLPS is ready to converge with MGNREGA and it was mutually decided to provide Animals to MGNREGA shed beneficiaries.















मा. हासल गौधी  
 राष्ट्रीय ग्रामीण रोजगार गारंटी अधिनियम  
 जिला रोधी  
 प्रखण्ड - बुधन  
 प - मुहगाड  
 ग्राम - उदरेह  
 यो. को नाम - चित्तो देवी को गाय शंढ निर्माण  
 मो. कोड - 17807010, प्र. संशि - 88920, टोल  
 फ्री नं. - 18003456, मददो द - 1831  
 मुखिया - समेत टोपो, स. सेवक - हरिहर गौधी, स. सेवक  
 स. समीप अंगारी, क. ओपेन - मो. लम्बत  
 85 - दीपक कुमार, मो. - रीत कुंवर

राजस्थान सहकारी विकास बोर्ड  
 मो. कोड - 17807010  
 प्र. संशि - 88920  
 मुखिया - समेत टोपो, स. सेवक - दीपक कुमार  
 स. सेवक - मो. लम्बत, स. सेवक - रीत कुंवर  
 प्र. संशि - 88920  
 व. अति - मो. लम्बत, स. सेवक - रीत कुंवर





# Poultry Shed







# Piggery Shed





# Compost Pit











- Significant difference in scale of employment between CFT Gram Panchayats and non-CFT Gram Panchayats observed in many blocks
- Possibilities of CFT demonstrated across the state – time to scale up
- Construction of a large number of livelihood-enhancing assets
- Large number of SHG members working as mates
- Large scale opening of job cards and bank accounts
- CFTs to cover whole block now
- Rigorous monitoring in the last few months



# Assets created with the support of CFTs



- SHG Mate
- NAREGA Sahayta Kendra
- VRPs
- GP Help Desk
- Participatory Planning
- Identification and Planning for 5 Poorest HHs
- Scheme completion certificate
- MKSP
- AKMs, APS actively roped in livelihood convergence

- Gram Nigarani Samiti of VO
- CLF as PIA under consideration
- MGNREGA Processes are being made part of NRLM SOP
- Fly ash brick
- Sanitary napkins
- INRM, Dobha, Mango plantation, Parti vikas,

## Major Initiatives taken under MGNREGA



# Major Initiatives-Simplification of sanctioning process



- **Verification of land records by Circle Office not required for sanctioning individual scheme upto 1.5 lakhs**
- **Land records to be self-attested by land owner and verified by ward member (and traditional head in PESA areas)**
- **Formats related to administrative sanctioning simplified and standardized**
- **Model estimates of common schemes circulated for expediting technical sanction**
- **Seasonality calendar notified for sanctioning of schemes**
- **Block Development Officer given authority to accord administrative sanction to schemes upto Rs. 10 lakh.**





# Major Initiatives- Seasonality Calendar

Season	Period	Types of Schemes
Pre-monsoon	March - June	Farm ponds, Staggered trench, 30X40 model, Gully plugging, Loose boulder structure, Land leveling and bunding, Pit-digging for plantation, Kuchcha road etc
Monsoon	July - September	Land leveling and bunding, Staggered trench, 30X40 model, Goat Shed, Poultry Shed, Pucca floor for cattle shed, plantation etc
Post-monsoon	October - February	Irrigation well, Farm ponds, Staggered trench, 30X40 model, Gully plugging, Loose boulder structure, Land leveling and bunding, Kuchcha road etc

# Major Initiatives

- DDCs are nominated as DPC.
- Role of Gram Panchayat (especially ward members) in specific processes of implementation and monitoring of MGNREGA notified to enhance transparency and accountability in the programme
- Role of Panchayat Samiti and Zila Parishad in specific processes of planning and monitoring of MGNREGA notified to enhance transparency and accountability in the programme
- **Detailed guidelines on selection, role, training and monitoring of mates notified – SHG women**
- **“Scheme completion certificate” introduced to ensure certification of beneficiary, ward member and Gram Panchayat Mukhiya before closure of scheme**
- 100% transfer of post-office accounts of workers to banks

# Major Initiatives-

- Institutionalising weekly Rozgar Diwas – helping to open Panchayat Bhawans
- Focus on planning and implementing individual schemes – to strengthen rural livelihoods
- **Building capacities of Block Development Officers and Block Programme Officers on Integrated Natural Resource Management. (19 Batches trained by KABIL)**
- Building capacities of Gram Panchayat representatives (Mukhiyas and Ward members) on processes of MGNREGA



# Major Initiatives

- Priority given to NRM related works
- Convergence institutionalised with JSWM in 1051 villages
- Major focus on IBS works
- Birsa Munda Bagwani Yojna
- Construction of Farm pond at land of poorer people
- Establishment of independent Social Audit Unit
- Establishment of Call center, Mobile App and web portal for grievance redressal.
- Establishment of flying squad at head quarter level
- Establishment of NREGA Sahayata Kendra
- Dashboard for daily monitoring
- Active on social media
- Massive training have been done and tentative training calendar is prepared.

# Major Initiatives- Grievance Redressal

- Recruitment of Grievance Redressal Expert – strengthening planning cell.
- Internal vigilance team, Regular inspection of districts/blocks by state team.
- Dedicated human resource, Helpline and WhatsApp number to receive complaints, apart from written, email, SMS, and 181.
- Online portal JanSamvad (Mukhyamantri Seedhi Baat)





# Use of GIS in INRM Planning

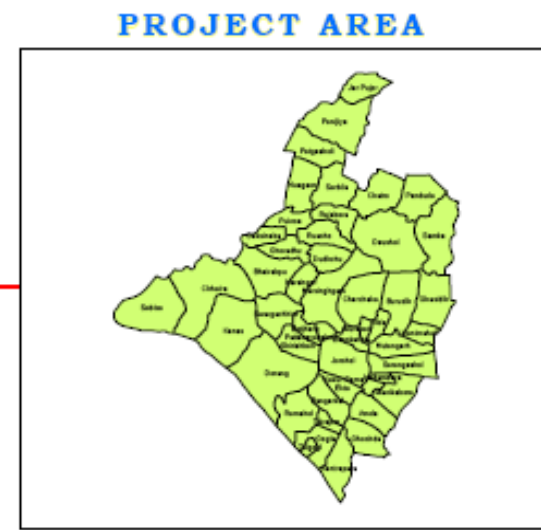
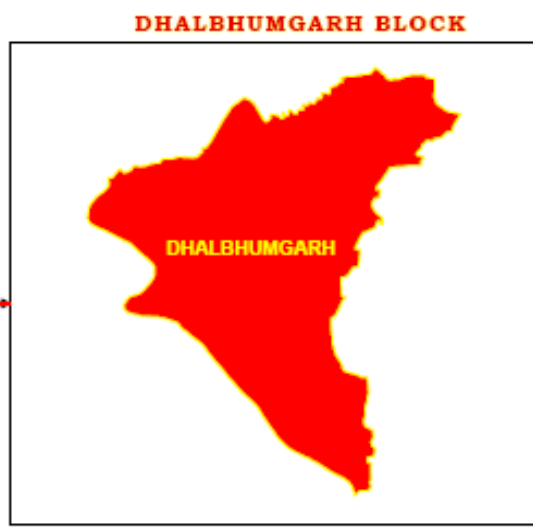
- **Landscape analysis/ Topographic analysis**
  - **Data/ Base Map Requirement:**
  - **Toposheet (1:50,000 Scale)**
  - **Satellite Image (Cartosat-II-2.5 M & LISS-IV-5.8 M)**
  - **Slope Map, LULC, Geology Map, Geomorphology Map, GWP Map, Contour Map, Soil Map, Drainage Map, Wasteland Map**
  - **Rainfall Data**
  - **Demographic Data**
  - **Arc GIS-10.5, ERDAS**
  - **RS data (Satellite data)- Raster Format (Grid)**
  - **GIS data (Vector data) Point, Line and polygon**

- **Delineation of Ridge Area, Wasteland, Rainfed Area, Drainage line (Low land Area)**
- **AFETR DELINEATION OF THE DIFFERENT PATCHES, PREPARATION OF ACTION PLAN/TREATMENT PLAN MAPS WITH THE HELP OF CADASTRAL MAPS AND PARTICIPATERY PLANNING APPROACH.**
- **GROUND TRUTHING**
- **IMPLEMENTATION**



P U R B I   S I N G H B H U M - N A B A R D - 2 / 2 0 1 6 - 1 7

P U R B I   S I N G H B H U M - N A B A R D - 2 / 2 0 1 6 - 1 7

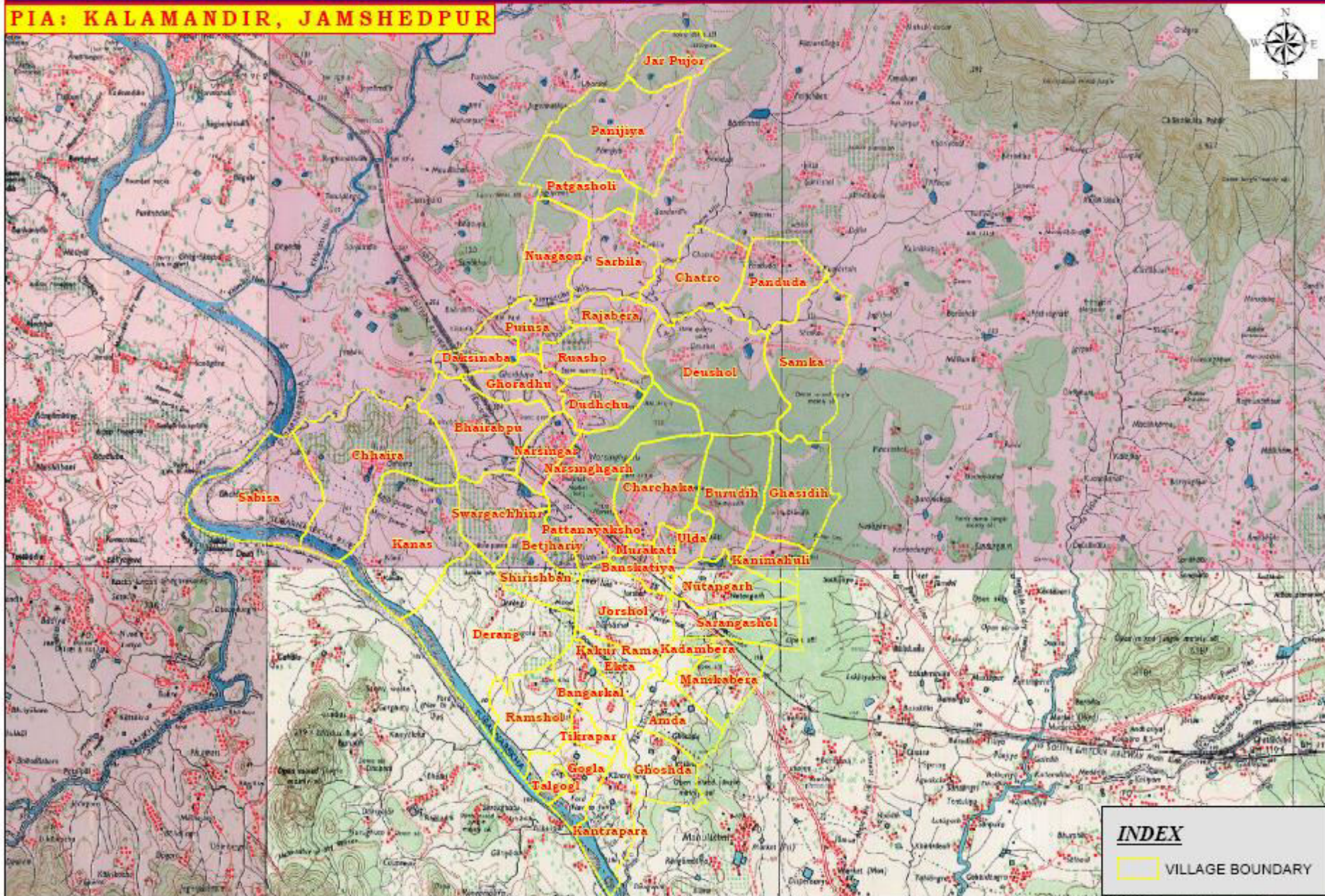




# TOPOGRAPHY MAP WITH VILLAGE BOUNDARY OF PURBISINGHBHUM-NABARD-2/2016-17

BLOCK: DHALBHUMGARH; DISTRICT: PURBI SINGHBHUM

PIA: KALAMANDIR, JAMSHEDPUR

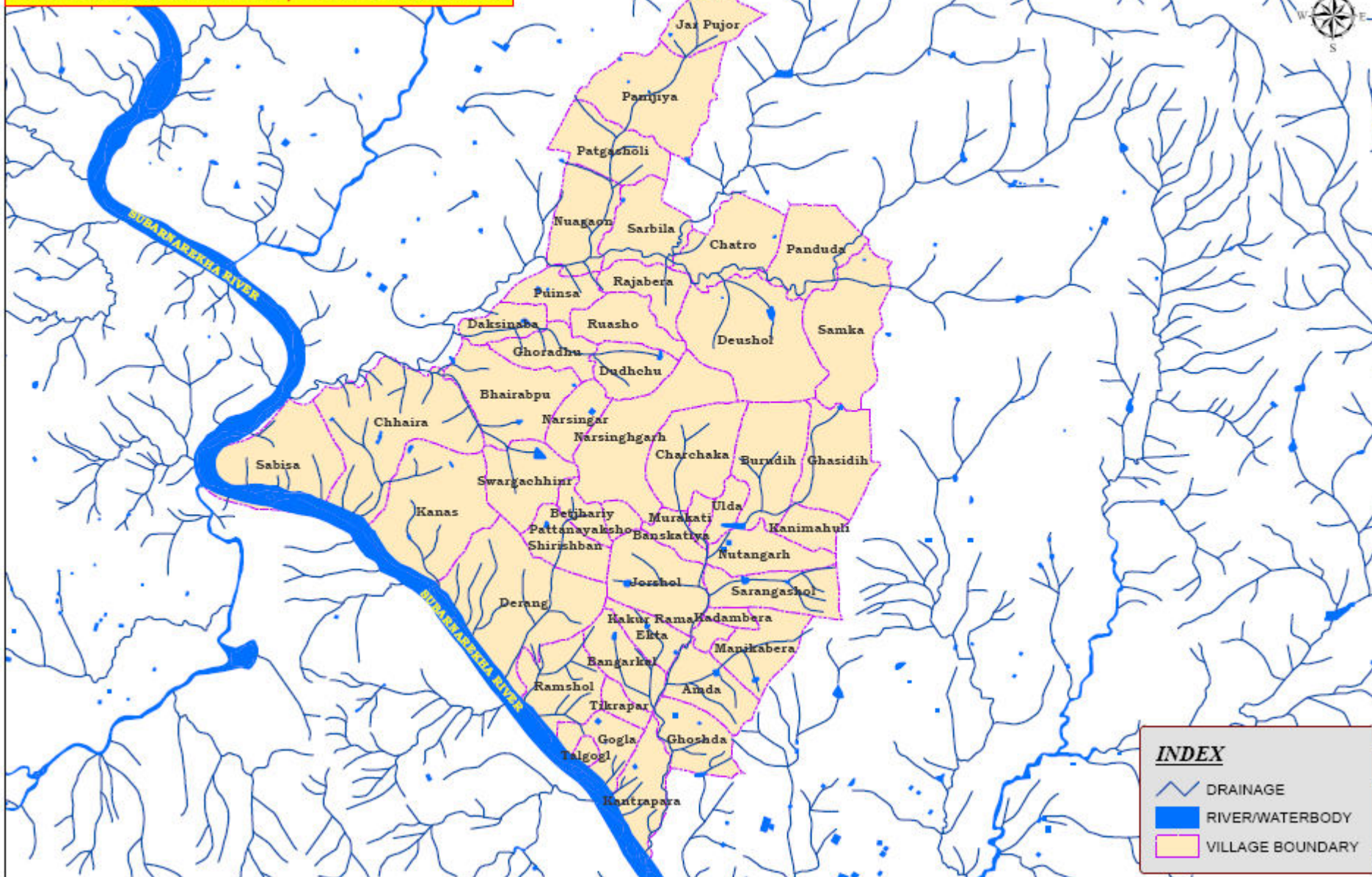




# DRAINAGE MAP OF PURBISINGHBHUM - NABARD - 2/2016 - 17

BLOCK: DHALBHUMGARH; DISTRICT: PURBI SINGHBHUM

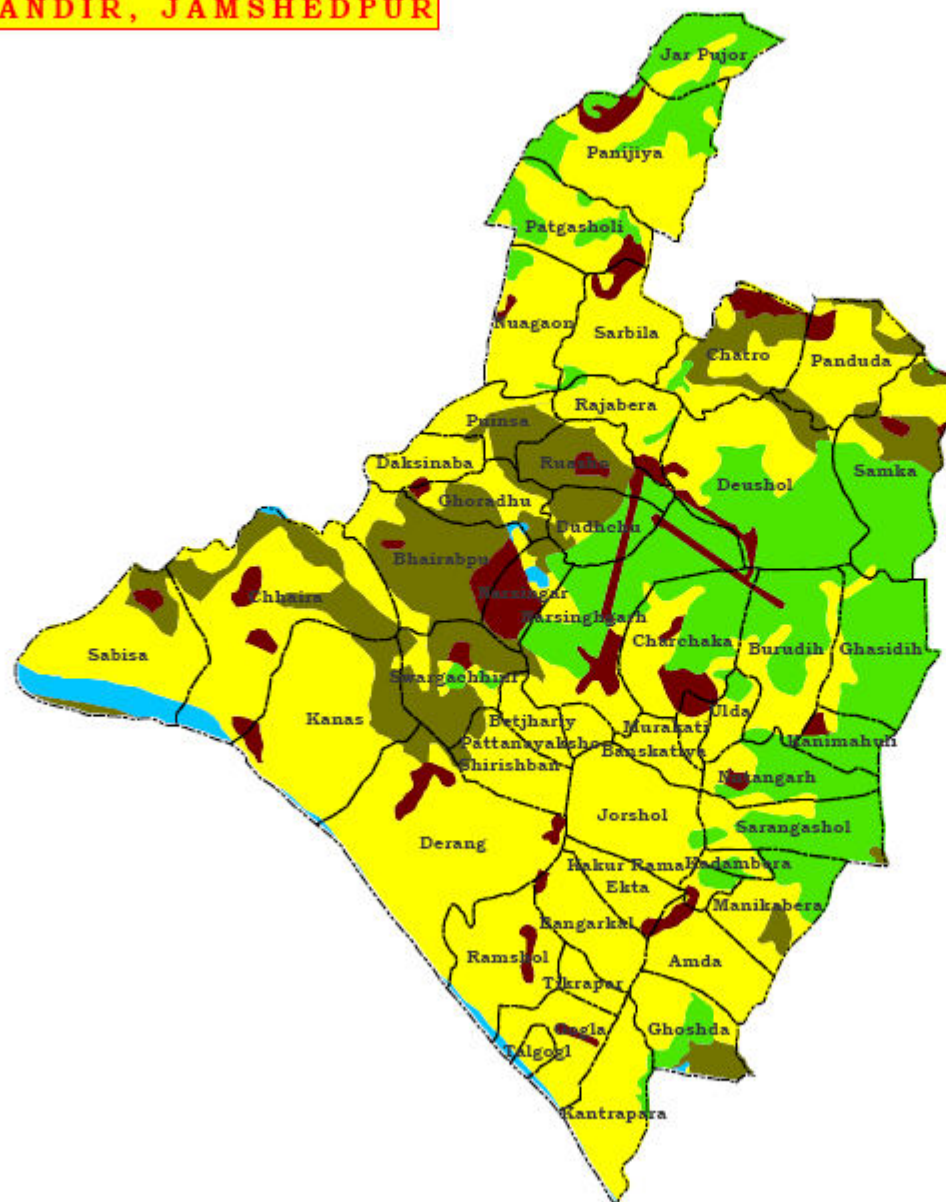
PIA: KALAMANDIR, JAMSHEDPUR



# LAND USE/LAND COVER (LU/LC) MAP OF PURBISINGHBHUM-NABARD-2/2016-17

BLOCK: DHALBHUMGARH; DISTRICT: PURBI SINGHBHUM

PIA: KALAMANDIR, JAMSHEDPUR



## INDEX

VILLAGE BOUNDARY

## LAND USE/LAND COVER TYPE

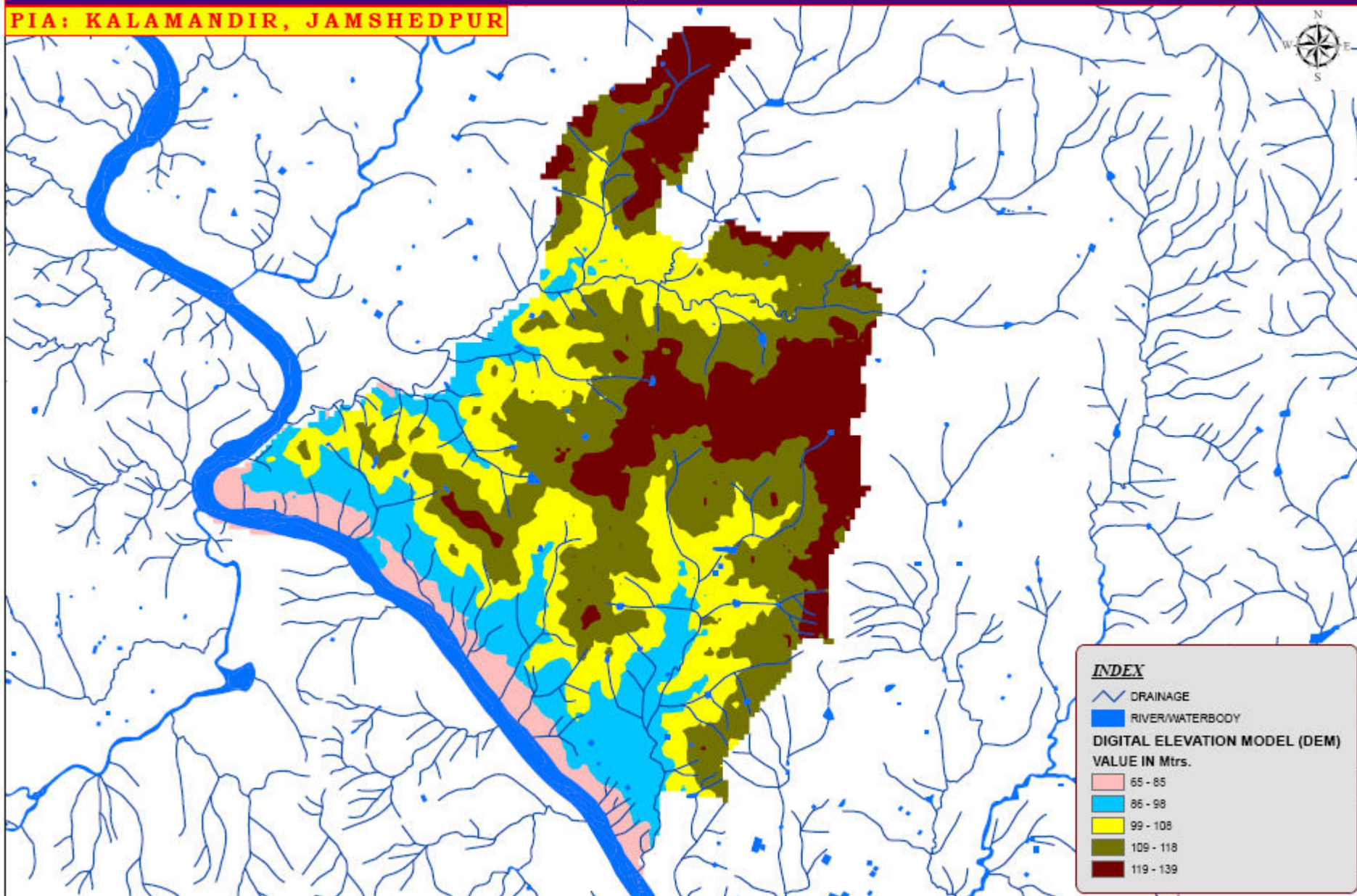
- Agricultural Land
- Forest
- Cultivable Wasteland
- Non Cultivable Wasteland
- Waterbodies



# DIGITAL ELEVATION MODEL (DEM) MAP OF PURBISINGHBHUM-NABARD-2/2016-17

BLOCK: DHALBHUMGARH; DISTRICT: PURBI SINGHBHUM

PIA: KALAMANDIR, JAMSHEDPUR







# Action Plan Map/ Treatment Map



**PROPOSED ACTIVITY MAP OF VILLAGE : AMDA Sheet No. I of I**  
**PROJECT NAME: EAST SINGHBHUM-NABARD- 2/2016-17, PIA : KALAMANDIR, DHALBHUMGARH**













**PROPOSED ACTIVITY MAP OF VILLAGE : GHOSHDA Sheet No. 1 of 1**  
**PROJECT NAME: EAST SINGHBHUM-NABARD- 2/2016-17, PIA : KALAMANDIR, DHALBHUMGARH**

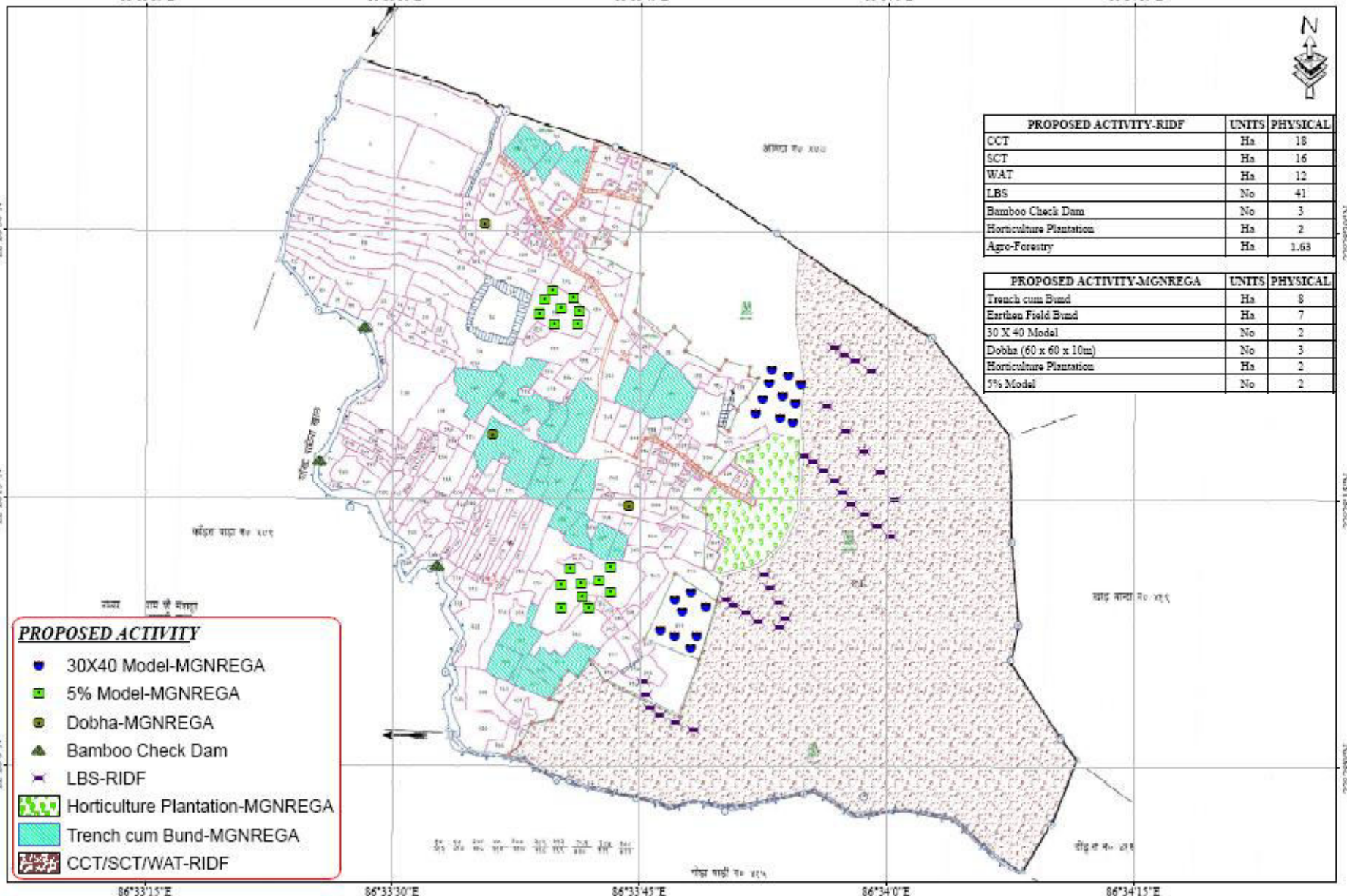


PROPOSED ACTIVITY-RIDF	UNITS	PHYSICAL
CCT	Hs	18
SCT	Hs	16
WAT	Hs	12
LBS	No	41
Bamboo Check Dam	No	3
Horticulture Plantation	Hs	2
Agro-Forestry	Hs	1.63

PROPOSED ACTIVITY-MGNREGA	UNITS	PHYSICAL
Trench cum Bund	Hs	8
Earthen Field Bund	Hs	7
30 X 40 Model	No	2
Dobha (60 x 60 x 10m)	No	3
Horticulture Plantation	Hs	2
5% Model	No	2

**PROPOSED ACTIVITY**

-  30X40 Model-MGNREGA
-  5% Model-MGNREGA
-  Dobha-MGNREGA
-  Bamboo Check Dam
-  LBS-RIDF
-  Horticulture Plantation-MGNREGA
-  Trench cum Bund-MGNREGA
-  CCT/SCT/WAT-RIDF































Latitude: 24.945506  
Longitude: 87.420997  
Elevation: 136.63m  
Accuracy: 4.6m  
Time: 30-06-2018 18:02  
Note: Activity- TCB, village-

Bada Amarpur Beneficiary- Panchanand Chaudhary











# Convergence Plan

- Department of Agriculture- (120 + 20) Cr
- Department of Animal Husbandry-98 Cr
- Department of Fisheries (90/10) – 4.5 Cr + Training
- Department of Horticulture – 5 Cr
- Department of Welfare (70/30) – 800 Cr
- JOHAR- 1500 Cr
- JS WM- 347 Cr
- Department of Woman & Child Development – 100 Cr

# State's Position in Country



# Asset Creation: Farm Pond

S.No	State	Takenup/ Completed		
		Total	Ongoing	Completed
1	ANDHRA PRADESH	274103	117743	156360
<b>2</b>	<b>JHARKHAND</b>	<b>180781</b>	<b>64413</b>	<b>116368</b>
3	TELANGANA	141024	90824	50200
4	WEST BENGAL	117573	84737	32836
5	CHHATTISGARH	49429	30213	19216
6	RAJASTHAN	74045	56404	17641
7	KARNATAKA	58953	41576	17377
8	HIMACHAL PRADESH	24515	15683	8832
9	ODISHA	12378	5246	7132
10	MADHYA PRADESH	21899	15207	6692
11	UTTAR PRADESH	18087	12141	5946
12	MAHARASHTRA	23010	18181	4829
13	GUJARAT	10389	6069	4320
14	TAMIL NADU	7307	3543	3764
15	UTTARAKHAND	7520	3809	3711
<b>National</b>		<b>1064297</b>	<b>598065</b>	<b>466232</b>

# Asset Creation: Animal Sheds

Sl No	States	Total Taken Up	Ongoing	Completed
1	<b>JHARKHAND</b>	<b>122569</b>	<b>95259</b>	<b>27310</b>
2	CHHATTISGARH	17529	9136	8393
3	UTTARAKHAND	28113	19813	8300
4	GUJARAT	24746	20668	4078
5	HIMACHAL PRADESH	10077	6519	3558
6	MAHARASHTRA	12934	10865	2069
7	MEGHALAYA	12280	10345	1935
8	BIHAR	7022	5936	1086
9	SIKKIM	2140	1488	652
10	KERALA	982	610	372
11	NAGALAND	864	625	239
12	MANIPUR	704	607	97
13	JAMMU AND KASHMIR	564	488	76
14	ASSAM	276	239	37
15	MIZORAM	19	6	13
<b>National</b>		<b>240969</b>	<b>182750</b>	<b>58219</b>



# Asset Creation: Compost Pits

S.No	State	Takenup/ Completed		
		Total	Ongoing	Completed
1	WEST BENGAL	234275	154141	80134
2	ANDHRA PRADESH	110852	51152	59700
3	<b>JHARKHAND</b>	<b>56276</b>	<b>38358</b>	<b>17918</b>
4	MADHYA PRADESH	18539	9475	9064
5	UTTARAKHAND	14855	6214	8641
6	MAHARASHTRA	21052	13802	7250
7	TELANGANA	19420	13160	6260
8	TRIPURA	7932	2057	5875
9	CHHATTISGARH	8834	4343	4491
10	UTTAR PRADESH	14587	10482	4105
11	TAMIL NADU	23659	19873	3786
12	ODISHA	9110	5860	3250
13	HIMACHAL PRADESH	4599	2080	2519
14	RAJASTHAN	35399	32958	2441
15	BIHAR	14614	12208	2406
<b>National</b>		<b>613008</b>	<b>388272</b>	<b>224736</b>

# Asset Creation: AWC Building

S.No	State	Takenup/ Completed		
		Total	Ongoing	Completed
1	ODISHA	10594	7517	3077
2	ANDHRA PRADESH	6262	3220	3042
3	TAMIL NADU	3602	1463	2139
4	CHHATTISGARH	5796	4859	937
5	MADHYA PRADESH	5412	4478	934
6	<b>JHARKHAND</b>	<b>3708</b>	<b>2876</b>	<b>832</b>
7	UTTAR PRADESH	11998	11179	819
8	WEST BENGAL	5121	4795	326
9	UTTARAKHAND	1322	1005	317
10	RAJASTHAN	2460	2172	288
11	TELANGANA	1528	1250	278
12	KARNATAKA	2074	1903	171
13	TRIPURA	292	203	89
14	MIZORAM	91	29	62
15	ARUNACHAL PRADESH	229	182	47
<b>National</b>		<b>63345</b>	<b>49854</b>	<b>13491</b>



# Asset Creation: Irrigation Wells

S.No	State	Takenup/ Completed		
		Total	Ongoing	Completed
1	MADHYA PRADESH	95212	77564	17648
2	MAHARASHTRA	71069	57127	13942
3	<b>JHARKHAND</b>	<b>34561</b>	<b>23515</b>	<b>11046</b>
4	ANDHRA PRADESH	13561	6206	7355
5	KERALA	16996	11504	5492
6	KARNATAKA	12776	9270	3506
7	RAJASTHAN	14938	12452	2486
8	CHHATTISGARH	9351	7028	2323
9	ODISHA	15324	13106	2218
10	TELANGANA	9638	7488	2150
11	GUJARAT	2052	1214	838
12	UTTAR PRADESH	1946	1378	568
13	WEST BENGAL	629	385	244
14	TAMIL NADU	670	454	216
15	BIHAR	643	509	134
<b>National</b>		<b>300380</b>	<b>229915</b>	<b>70465</b>

# Timely Payment

S. No	State	Delayed Payment		Total wage payment		% Of Timely Paid Transaction
		Total transactions	Amount	Total transactions	Amount	
1	TAMIL NADU	432376	2529.05	51959056	354012.49	99%
2	PUDUCHERRY	1516	9.69	167685	1225.57	99%
3	KERALA	341940	3908.76	12957502	149638.18	97%
4	<b>JHARKHAND</b>	<b>465596</b>	<b>4580.34</b>	<b>9148604</b>	<b>94489.26</b>	<b>95%</b>
5	UTTARAKHAND	102803	2000.53	1977739	36509.21	95%
6	CHHATTISGARH	1199341	10907.77	19939278	182904.91	94%
7	HIMACHAL PRADESH	125011	2609.76	1821806	35785.34	93%
8	RAJASTHAN	1566993	22269.65	21781106	312314.79	93%
9	WEST BENGAL	4053019	62717.96	35269130	522661.56	89%
10	ANDHRA PRADESH	4850589	41310.12	41159603	299079.47	88%
11	ODISHA	2199414	22720.35	15511428	146722.74	86%
12	TELANGANA	3130018	23085.9	21684673	152912.64	86%
13	TRIPURA	379238	4532.45	2435067	29184.42	84%
14	MADHYA PRADESH	4303279	39663.42	27038035	256891	84%
15	HARYANA	158827	4022.33	995317	23219.29	84%
<b>National</b>		<b>47730089</b>	<b>599597.93</b>	<b>338573455</b>	<b>3653571.17</b>	<b>86%</b>



# Direct Benefit Transfer (DBT)

S No.	State	Active workers	Total Number of Workers Converted into Aadhaar Based Payment	% of Total Number of Workers Converted into Aadhaar Based Payment
1	PUDUCHERRY	53861	49605	92%
2	KERALA	2275183	2043902	90%
3	ANDHRA PRADESH	8205378	7232431	88%
4	TELANGANA	5867391	5071113	86%
5	<b>JHARKHAND</b>	<b>2781919</b>	<b>2400269</b>	<b>86%</b>
6	HARYANA	695846	569384	82%
7	TAMIL NADU	8711336	7070378	81%
8	HIMACHAL PRADESH	1051409	816518	78%
9	SIKKIM	94910	70672	74%
10	TRIPURA	986082	705119	72%
11	UTTARAKHAND	993389	684757	69%
12	RAJASTHAN	9842242	6532225	66%
13	PUNJAB	1109553	712995	64%
14	UTTAR PRADESH	10171469	6533605	64%
15	CHHATTISGARH	5870021	3464728	59%
<b>National</b>		<b>113999950</b>	<b>65762588</b>	<b>58%</b>

S. N	State Name	Total Complete Work	Accepted	% of GeoTag
1	SIKKIM	18295	21172	116%
2	PUDUCHERRY	4054	4107	101%
3	TAMIL NADU	1668068	1673638	100%
4	BIHAR	728886	679572	93%
5	KERALA	1206302	1123693	93%
6	CHHATTISGARH	1165138	1081890	93%
7	MADHYA PRADESH	2761074	2480314	90%
8	ODISHA	1028719	913539	89%
9	UTTARAKHAND	368118	325787	89%
10	<b>JHARKHAND</b>	<b>935754</b>	<b>827061</b>	<b>88%</b>
11	MIZORAM	53762	46616	87%
12	UTTAR PRADESH	4544205	3921996	86%
13	RAJASTHAN	1143044	973165	85%
14	ANDHRA PRADESH	5441217	4587466	84%
15	HIMACHAL PRADESH	436359	364152	83%
<b>National</b>		<b>33738443</b>	<b>28224113</b>	<b>84%</b>





Thanks